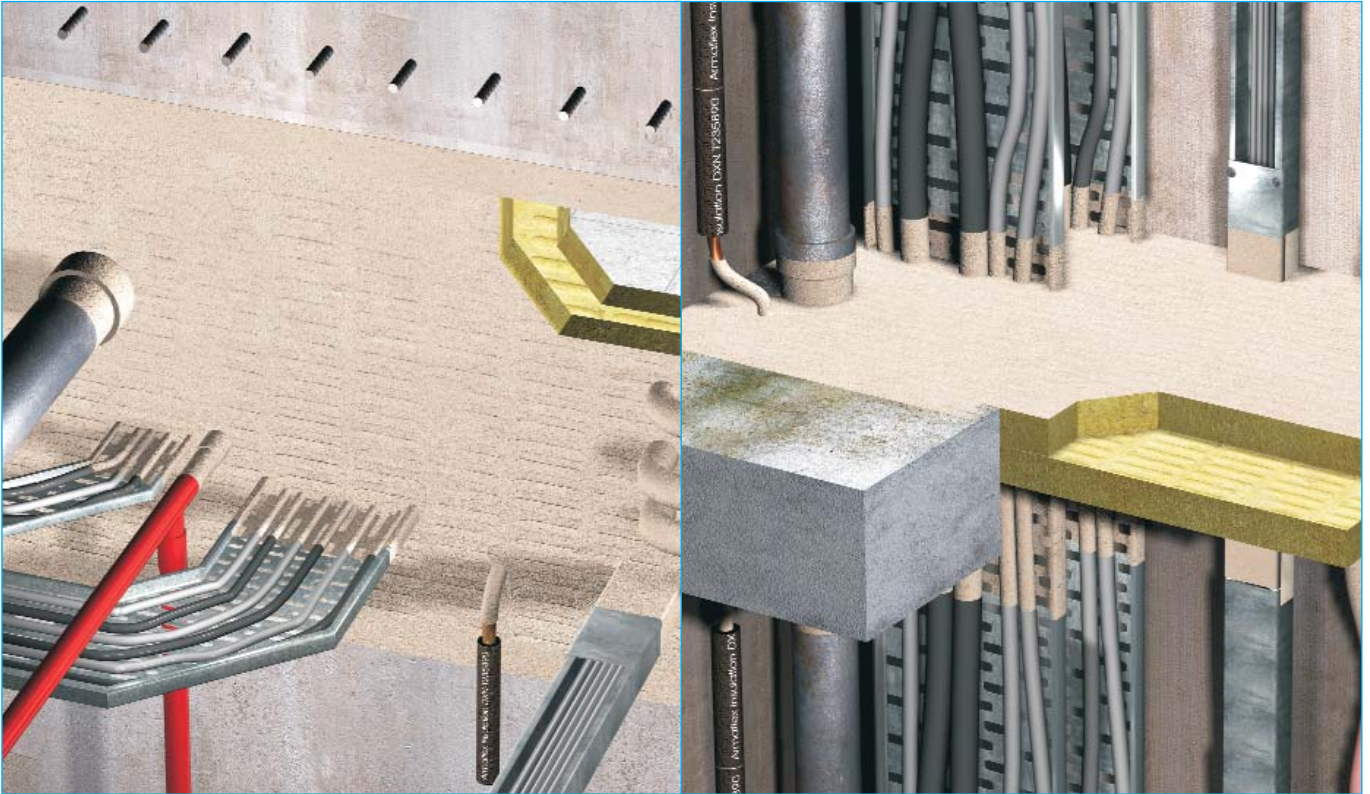


PROMASEAL® Bulkhead Sealer System Installation Instruction



The PROMASEAL® Bulkhead Sealer System is made from high density mineral wool, which is then coated with PROMASEAL® Bulkhead Sealer. The coated mineral wool remains in-situ during a fire situation and forms a barrier against the passage of flame, smoke and toxic gases.

The system can be installed in both wall and floor applications and has been tested for up to 120 minutes with various services penetrating the barrier.

In many buildings, power cables (such as computer and telecommunication cables) are being continuously added, altered and removed. PROMASEAL® Bulkhead Sealer System enables this process to be carried out with the minimum of mess and inconvenience.

The services that have been tested in wall and floor applications include cables in bundles, cables on steel cable trays and plastic/metallic pipes. Please contact Promat for further information on the services types.

Other components of an integrated fire stopping system can be used around services that penetrate walls through oversize openings too large to be sealed with PROMASEAL® AN Acrylic Sealant, PROMASEAL® IBST™ or PROMASEAL® Pillows.

Maximum wall opening height is 1000mm. For openings >500mm high, the length of the opening is limited to give a maximum opening size of 1m². For openings up to and including 500mm high, the opening length is unlimited as long as the wall is structurally sound. If the opening is greater than the above dimensions it must be reduced using

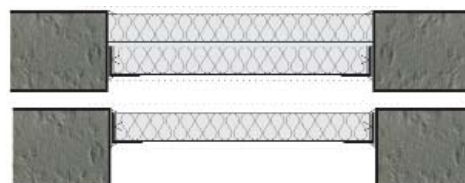
the same construction materials as the wall itself or by installing structural elements across the opening to create maximum size openings as described. In drywall lightweight board partition constructions, any openings must be trimmed all round with the partition framing sections to close the wall cavity.

A 120 minute PROMASEAL® Bulkhead Sealer System for walls consists of 50mm x 150kg/m³ coated x 2 mineral fibre batts, one on each side of the wall. Each batt is placed in the wall opening with the coated face exposed and sitting flush with the face of the wall.

Maximum permitted width of any floor opening is 600mm, supported to the edges with either a concrete ledge (minimum 20mm bearing) or on minimum 20mm x 20mm x 1.2mm steel angle bolted to the slab at 600mm centres with M8 x 40mm steel masonry anchors.

If the opening exceeds 1500mm in length, the barrier must be supported at transverse joints (at maximum 1500mm centres) with 50mm x 50mm x 1.2mm steel angles fixed back to back, ensuring any gap between the batts and the steel frame is no greater than 5mm. Please consult Promat for further information on the opening requirements.

Below is the cross section of typical floor applications:



PROMASEAL® Bulkhead Sealer System Installation Instruction

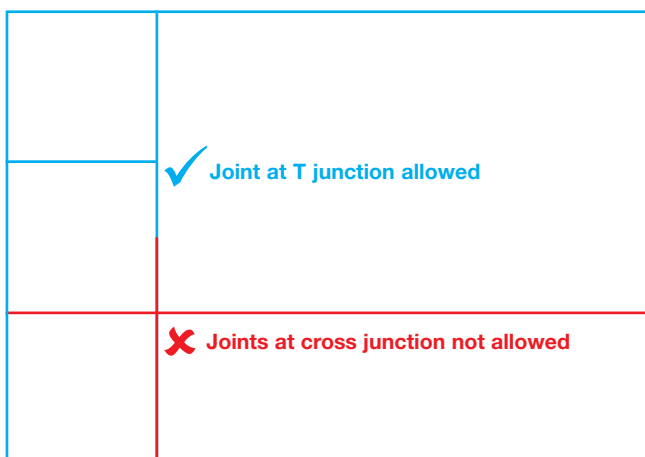
Installation Method

Before placing the batts in position, apply a thin film (nominal 2mm thick) of PROMASEAL® Bulkhead Sealer over the entire mating surface of the exposed edges of the concrete floor and steel angles.

Cut the pre-coated batts to fit the opening. Trim the batts around the services so that there are minimal gaps between the services and batt, and seal with PROMASEAL® Bulkhead Sealer. Coat all exposed edges of the batts with nominal 2mm of PROMASEAL® Bulkhead Sealer. If there are any gaps that exceed 5mm, plug them with off-cuts of the system for the full batt thickness and coat the exposed face with PROMASEAL® Bulkhead Sealer.

Using PROMASEAL® Bulkhead Sealer coat all services that pass through the opening for a minimum distance of 100mm from the face of both sides of the batt. Coat the services over their entire length where they pass through the batt. Seal any small gaps between the batt and penetrating services with PROMASEAL® Bulkhead Sealer. Coat the services over their entire length where they pass through the wall (cavity) in the same way.

Wherever it is necessary to cut and butt joint the batts, ensure the cut surfaces are coated with PROMASEAL® AN Acrylic Sealant in the same manner as previously described. It is not permissible to have coinciding or overlapping joints between layers. Do not have cross junctions of butt joints. See illustration below.



Seal any gaps between the batt and penetrating services with PROMASEAL® AN Acrylic Sealant on the back of the first batt and on the face of the second batt*.

**Installation method described is to allow for installation from one side only. If it is possible to access both faces of the wall/floor, repeat the application of the PROMASEAL® AN Acrylic Sealant as above, on both faces for a more workman like appearance.*

Ensure that any joints in the batts are staggered by approximately 150mm between the two layers. When the system is in place, coat the junction of the batt and wall/floor with nominal 2mm of PROMASEAL® Bulkhead Sealer, 50mm wide on both the batt and wall/floor. To give a neat appearance, place masking tape on the wall/floor, 50mm away from the junction and apply coat to this line. Remove tape once the PROMASEAL® AN Acrylic Sealant dries out.

This system is non loadbearing and suitable warning signs should be placed near the barrier to clearly identify this. Fire barrier identification stickers are provided with the system and should be filled out and attached to each installation. See example below.



Promat provides a wide range of systems for compartmentation, fire resistant air and cable ducts, structural steel protection, fire stopping and partitions. For assistance with any proactive fire protection problems, contact the nearest Promat office.

Promat Australia Pty. Ltd.

Tel: 1800 PROMAT (776 628) Email: mail@promat.com.au Website: www.promat.com.au
Fax: 08 8352 1014 (South Australia) 02 9630 0258 (New South Wales) 1800 334 598 (Victoria and Queensland)

an Etex GROUP company