

Promat

Promat Australia Pty. Ltd.

SYSTEM CERTIFICATE*

This is to certify that

PROMATECT® 100

has been tested/approved for lightweight partitions

in accordance with “Australian Standard 1530: Part 4

Methods for fire tests on building materials, components and structures”

PROMATECT® 100 Steel Stud Partitions

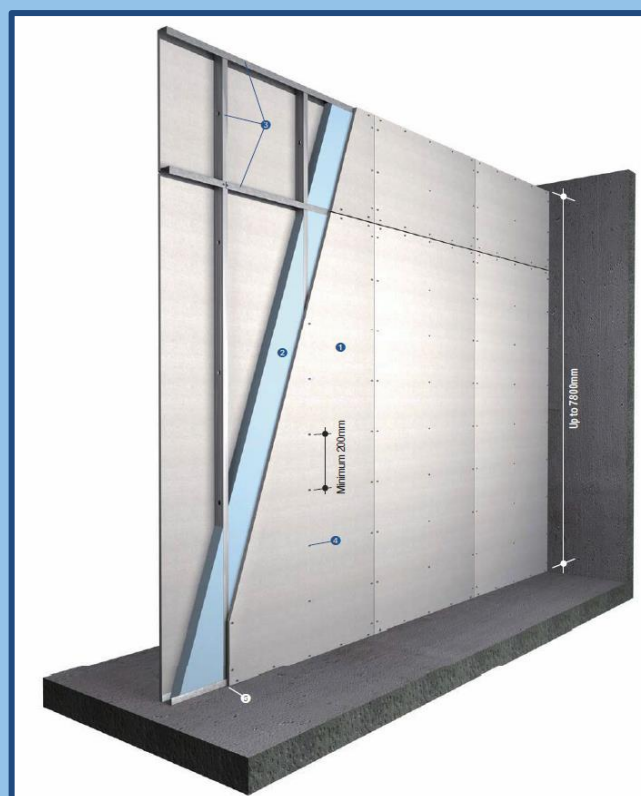
(Refer to report WFRA 41088, WFRA 45883, FSRG 2014-054, BRE P106900-1005 Issue 1)

PROMATECT® 100

Load-Bearing and Non-Load Bearing Steel Stud Partitions

PROMATECT® 100 Thickness	Stud	FRL	Maximum Height
15mm	Single	-/60/60	8,500mm
20mm	Single	-/120/120	8,500mm
20mm	Single	120/120/120	4,800mm
40mm	Single	-/240/240	6,300mm

Alternative framing solutions for walls up to 15m



* This is NOT a test certificate. For installation instructions or further information please contact Promat Australia Pty. Ltd.

Dial: 1800 PROMAT (776 628)

Email: mail@promat.com.au

Visit: www.promat.com.au