

Promat

Promat Australia Pty. Ltd.

SYSTEM CERTIFICATE*

This is to certify that

PROMATECT® 100

has been tested/approved for lightweight partitions

in accordance with “Australian Standard 1530: Part 4

Methods for fire tests on building materials, components and structures”

PROMATECT® 100 Timber Stud Partitions

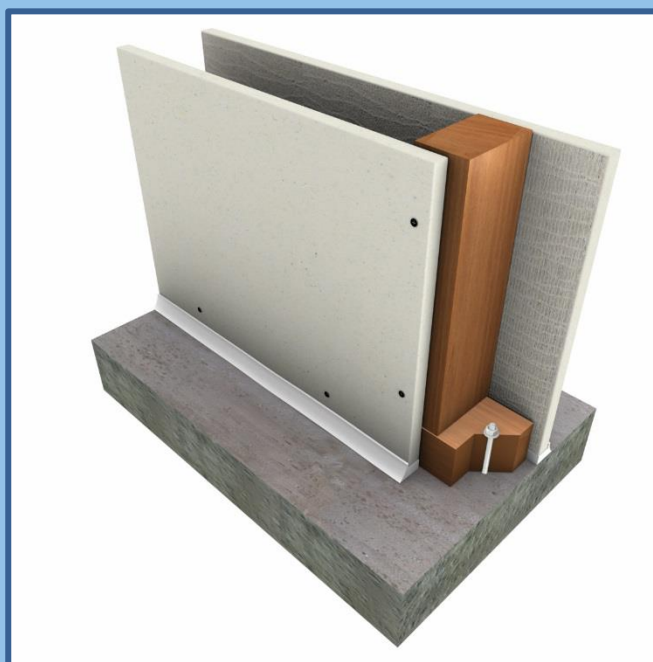
(Refer to report CC232158B, WFRA 41088as.1, FR 6112, FR 6113)

PROMATECT® 100

Load-Bearing and Non-Load Bearing Timber Stud Partitions

PROMATECT® 100 Thickness	Stud	FRL	Maximum Height
15mm	Single	60/60/60	4,000mm
20mm	Single	-/120/120	3,000mm
20mm	Single	90/90/90	4,000mm
20mm	Single	120/120/120 ⁽¹⁾	3,000mm

⁽¹⁾ Framing to be determined by a structural engineer



* This is NOT a test certificate. For installation instructions or further information please contact Promat Australia Pty. Ltd.

Dial: 1800 PROMAT (776 628)

Email: mail@promat.com.au

Visit: www.promat.com.au