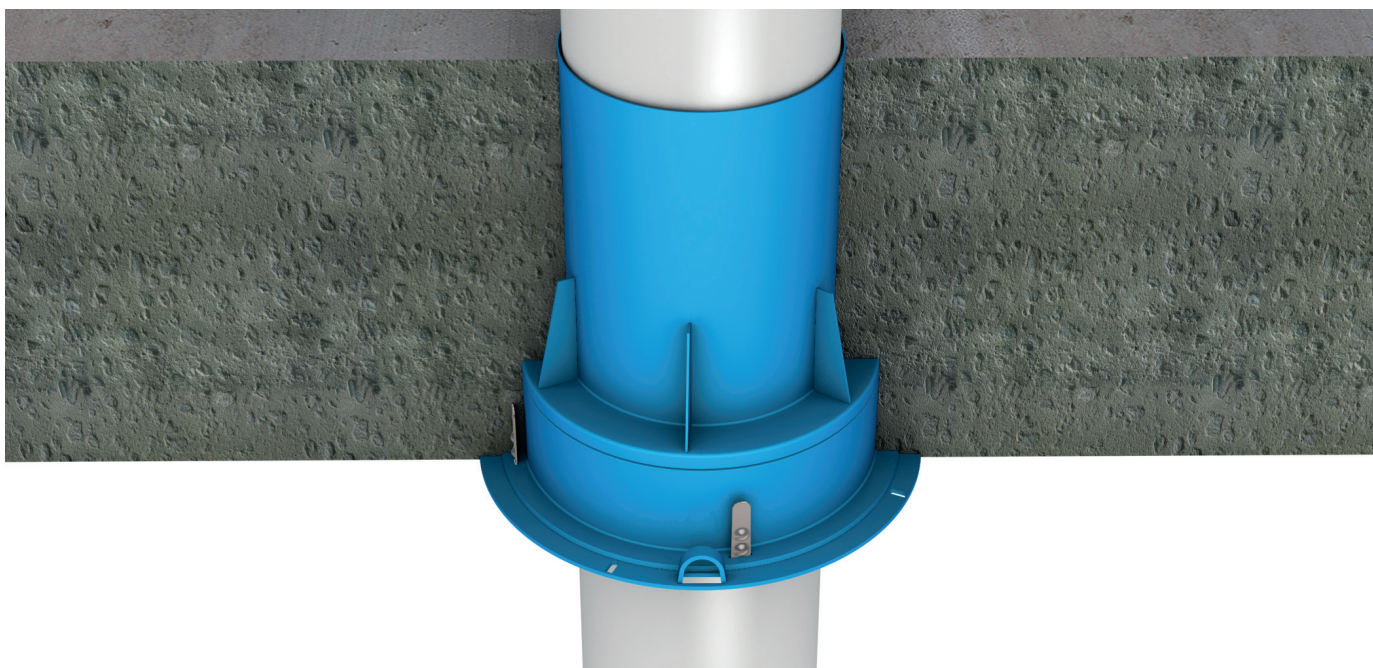


PROMASEAL® CIH Cast-in Collar Installation Instructions



PROMASEAL® CIH Cast-in Collars are designed to be fixed to the formwork prior to pouring of concrete floor slabs. The collars accommodate the uPVC pipe fitting within the thickness of the slab enabling space saving.

PROMASEAL® CIH Cast-in Collars are approved for use in stack applications only, not to be used with floor wastes.

PROMASEAL® CIH Cast-in Collars will close both the pipe and pipe fitting in the event of fire for uPVC pipes. The collars have been tested for up to -/240/240 fire resistance in accordance with AS 1530: Part 4: 2014 and AS 4072: Part 1: 2005 with various plastic pipes including uPVC, HDPE, Raupiano and other PP Acoustic pipes.

For slabs that use lost formwork or are less than 120mm thick, please consult Promat.

Installation method

Cast-in installation to concrete/masonry floors

Place the collar onto the formwork. Secure the collar into position with 20mm x 3mm flat head clouts, nailed through the slots provided. Do not skew nail.

After the formwork has been stripped, the pipe is ready to be placed into position. To do this, cut off any of the collar that is exposed above the surface of the slab, insert pipe and seal any gap between the pipe and collar with a Silicone sealant or for larger gaps it can also be backfilled with sand and cement mortar.

PROMASEAL® CIH Cast-in Collars have been extensively tested on permanent formwork decks, these are profiled steel decks with an uneven soffit requiring specialist application methods. Please consult Promat for details.

Typical specification

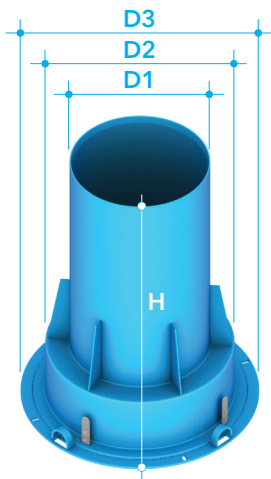
Where plastic pipes used for stack systems are to be fire rated, use PROMASEAL® CIH Cast-in Collars as tested to AS 1530: Part 4: 2014 and AS 4072: Part 1: 2005 to maintain the fire resistance of the element. All details in accordance with the manufacturers instructions. All work to be certified in an approved manner.

Approvals

Pipe materials and sizes in appropriate thickness for floor slabs. All results are based on 150mm thick slab. For thicker or thinner slabs or other sizes and types of pipe, please consult Promat.

Code no.	Pipe material	Pipe size	FRL
CIH 40	uPVC	40mm	-/240/240
CIH 50	uPVC	50mm	-/240/240
CIH 65	uPVC	65mm	-/240/240
CIH 80	uPVC	80mm	-/240/240
CIH 100	uPVC	100mm	-/240/240
CIH 40	HDPE	40mm	-/240/180
CIH 50	HDPE	50mm	-/240/180
CIH 65	HDPE	56mm	-/240/180
CIH 65	HDPE	63mm	-/240/180
CIH 100	HDPE	110mm	-/240/180

Dimensions



Code no.	Body			Flange
	H	D1	D2	D3
CIH 40	250mm	73mm	115mm	160mm
CIH 50	250mm	73mm	115mm	160mm
CIH 65	250mm	73mm	115mm	160mm
CIH 80	250mm	110mm	163mm	210mm
CIH 100	250mm	110mm	163mm	210mm

Promat provides a wide range of systems for compartmentation, fire resistant air and cable ducts, structural steel protection, fire stopping and partitions. For assistance with any passive fire protection problems, please consult Promat.



Promat Australia Pty Ltd

www.promat.com.au

T 1800 PROMAT (776 628) E PAPL.mail@etexgroup.com
 F (08) 8352 1014 (Head office) (02) 9630 0258 (New South Wales)
 1800 334 598 (Victoria / Queensland)